



## Northcote Avenue, London

A large 3-bedroom first floor apartment situated on a quiet cul-de-sac in the heart of Ealing Broadway centre. The property comes in great order throughout and has a long lease of 177 years and no onward chain.

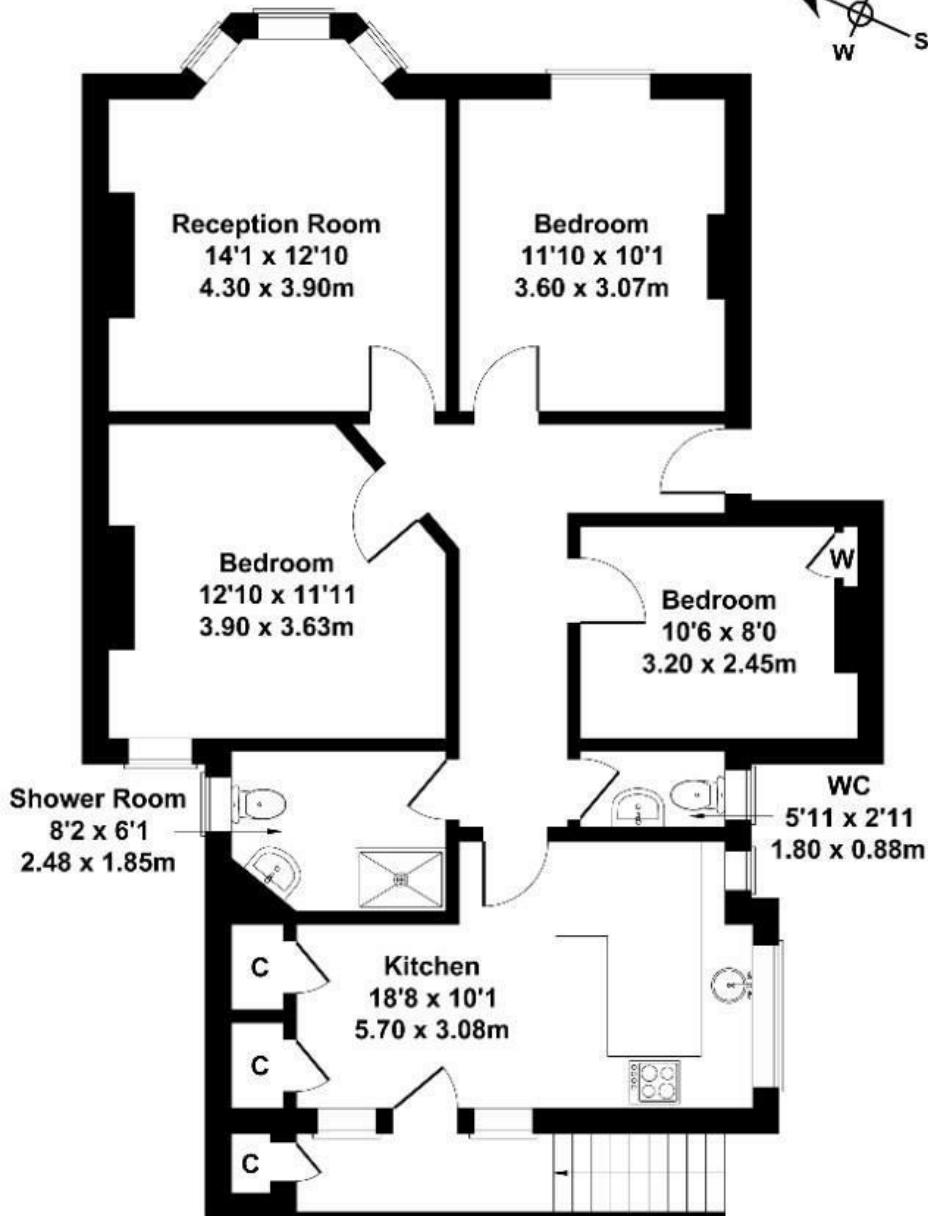
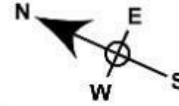
Measuring close to 900 sq ft with three double bedrooms, a stylish family bathroom, large separate eat in kitchen with direct access to communal courtyard and an ideal location to take advantage of everything Ealing Broadway has to offer.

£575,000

- Purpose built
- Three double bedrooms
- First floor
- Long lease 177 yrs
- Excellent condition
- Prime Ealing Broadway location
- Close to 900 sq ft
- No chain
- Close to multiple transport links
- Communal gardens

# Northcote Avenue

Approximate Gross Internal Area  
893 sq ft - 83 sq m



## FIRST FLOOR

Not to Scale. Produced by The Plan Portal 2024  
For Illustrative Purposes Only.

Energy Efficiency Rating		Current	Potential
Very energy efficient - lower running costs			
(92 plus) <b>A</b>			
(81-91) <b>B</b>			
(69-80) <b>C</b>			
(55-68) <b>D</b>			
(39-54) <b>E</b>		48	
(21-38) <b>F</b>			
(1-20) <b>G</b>			
Not energy efficient - higher running costs			
<b>England &amp; Wales</b>		EU Directive 2002/91/EC	